

SPRING / SUMMER

2026

BILLYBELT



CHOOSE BILLYBELT	04	WOMEN SOCKS	104
		Animals	106
CLOTHES	06	Checked	110
Swim shorts	06	Striped	112
Velvet shorts	10	Tennis	114
Cotton shorts	14	Vintage	116
Bermuda shorts	16	Heart	118
Men t-shirts	18	Glitter	120
Women t-shirts	22	Ankle socks	124
Zip-neck sweatshirts	24	Wool	128
Sweatshirts	26		
Fleece sweatshirts	30	KIDS SOCKS	130
Denim overshirts	32	Boys socks	132
Knitted overshirts	34	Girls socks	134
Chino pants	36		
Unisex sherpa jackets	38	ACCESSORIES	136
Women sherpa jackets	40		
Bi-material jackets	42	Men cotton scarves	136
		Men wool scarves	140
BELTS	46	Women small cotton scarves	144
Multicolored woven belts	48	Women cotton scarves	146
Plain woven belts	54	Caps	150
Webbing belts	58	Kids caps	154
Women leather belts	60	Men slippers	156
Women woven belts	62	Women slippers	158
UNDERWEAR	64	LUGGAGE	160
Boxer shorts	64	Shopping bags	160
Boxer briefs	68	Backpacks	162
		Duffle bags	166
MEN SOCKS	72	Wash bags	168
Animals	74	Wallets	172
Patterned	76		
Retro	78	SOCKS SETS	174
Checked	80		
Striped	82	POS ADVERTISING	178
Square	86		
Plain	88	Displays	178
Bamboo	92	Packaging	180
Ankle socks	94		
Mid-cut	96		
Herringbone	98	STARTING ADVICE	182
Thick cotton	100		
Wool	102	PRE-ORDERS	184



#SS26

CHOOSE **BILLYBELT**



EXCEPTIONAL QUALITY

Discover our wide range of clothing and accessories for men, women and kids, made from carefully selected and certified materials.

FLEXIBLE PAYMENT OPTIONS

Choose from our personalized payment options: direct debit, bank transfer or credit card. Choose the solution that suits you best.

RESPONSIVE LOGISTICS

Benefit from fast 72-hour delivery, free of charge for orders over €800 excluding VAT, anywhere in Europe. Never miss an opportunity thanks to our reliable supply chain.

SUPPORT FOR IMPLEMENTATION

A wide selection of sales and merchandising items (displays, racks, gift boxes, hangers, etc.) to enhance your product range.

DEDICATED CUSTOMER SERVICE

Our team of advisors and sales agents is at your disposal to guide you in your choice of assortments, according to your needs and budget.



Our sales advisors are at your disposal to support you every step of your **BILLYBELT** journey.

Contact us by phone or email:

+33 (0)3.28.35.38.89
contact@billybelt.com

SWIM SHORTS



#MDB15

Sizes	S to XXL
Composition	100% recycled polyester
Density	160 gr/m ²

Discover our new swim shorts with UV protection and quick-drying properties. Their elasticated waistband and soft inner mesh lining ensure complete freedom of movement. Delivered in a reusable pouch, they'll become your best friends for days at the beach.



NEW



MDB18
Deep lagoon

NEW



MDB17
Coral vibe

NEW



MDB16
Starfish

NEW



MDB15
Savage coast

NEW



MDB14
Sunset avenue

NEW



MDB13
Ocean drive

NEW



MDB12
Miami bloom

NEW



MDB11
Red riviera



#MDB12

#SHV

VELVET SHORTS



#SHV11

Sizes	S to XXL
Composition	100% cotton
Density	360 gr/m ²
Certification	BCI™

Dive into the world of BILLYBELT velvet shorts. They offer a soft feel and perfect breathability, ensuring remarkable durability. The relaxed fit, elasticated waistband, and drawstring guarantee a custom fit.



NEW



SHV16
Purple

NEW



SHV15
Anis

NEW



SHV14
Peach

NEW



SHV13
Dark green

NEW



SHV12
Burgundy

NEW



SHV11
Brown

NEW



SHV10
Denim blue



SHV08
Anthracite



SHV05
Yellow



SHV03
Ivory



#SHC

COTTON SHORTS

#SHC03

Sizes	S to XXL
Composition	100% cotton
Density	235 gr/m ²
Certification	BCI™

These brand new 100% BCI-certified cotton shorts combine comfort, style, and durability. Their thick 235 g/m² fabric ensures they hold their shape well over time. The relaxed fit, elasticated waistband, and meticulous finishing make them a summer wardrobe essential, available in 5 colors.

NEW



SHC05
Brick red

NEW



SHC04
Beige

NEW



SHC03
Anise green

NEW



SHC02
Khaki

NEW



SHC01
Denim blue

#SHO

COTTON BERMUDA SHORTS



#SH005

Sizes	28 to 38 (UK sizes)
Composition	100% organic cotton
Density	235 gr/m ²
Certification	GOTS

Embrace a casual style with these organic cotton bermuda shorts. Designed with a straight cut and made from GOTS-certified fabric, they combine fashion and ethical production. The meticulous finishing touches, including double stitching and an embroidered logo, add a touch of elegance to any look.



SH009
Salmon pink



SH008
Light blue



SH007
Green



SH005
Beige



SH002
Navy



SH001
Khaki

MEN T-SHIRTS



#TSD01

Sizes	S to XXL
Composition	100% organic cotton
Density	180 gr/m ²
Certification	GOTS

Show off a relaxed look with our new organic cotton t-shirts. Each design, adorned with unique prints or embroidery, adds a touch of originality and comfort to your style. An essential that stands out in every detail.

NEW



TSR07
Khaki, «On the road» print

NEW



TSR06
Black, Mehari embroidery

NEW



TSR05
White, Mehari embroidery

NEW



TSR04
Brown, scooter embroidery

NEW



TSB06
Yellow, «Chill like a piranha» print

NEW



TSB05
Pink, BILLY embroidery

NEW

**TSB04**

Green, «Smile like a Piranha» print

NEW

**TSD03**

White, lemon print

NEW

**TSD02**

Navy, cocktail embroidery

NEW

**TSD01**

Blue, lemon print

**TSV11**

White, flower print

**TSV10**

Orange, bicycle print



TSV08
White, surfer print



TSV06
Blue, BILLYCLUB print



TSV05
White, bicycle embroidery



#TSD02

WOMEN T-SHIRTS



#TSW03

Sizes	S to L
Composition	100% organic cotton
Density	180 gr/m ²
Certification	GOTS

This women's t-shirt, made from 100% GOTS-certified organic cotton, combines softness, style and respect for the environment. Its 180 g/m² knit ensures it will hold its shape beautifully over time. Printed or embroidered details and a modern cut make it a colorful and sustainable piece, available in 6 colors.

NEW



TSW06
Red, sun print

NEW



TSW05
Brown, sun print

NEW



TSW04
Anthracite, sun print

NEW



TSW03
Olive, sun embroidery

NEW



TSW02
Purple, sun embroidery

NEW



TSW01
White, sun embroidery

#SWZ

ZIP-NECK SWEATSHIRTS



#SWZ02

Sizes	S to XXL
Composition	100% organic cotton
Density	400 gr/m ²
Certification	GOTS

Made from 100% GOTS-certified organic cotton, this zip-neck sweatshirt prioritizes quality and durability. Its thick 400 g/m² fabric provides warmth and comfort, while the zip neck and BILLYBELT logo patch on the chest give it a relaxed, modern look. Available in 3 colors.

NEW



SWZ03
Brown

NEW



SWZ02
Navy

NEW



SWZ01
Green

#SWE/SWV

SWEATSHIRTS



#SWV08

Sizes	S to XXL
Composition	100% organic cotton
Density	400 gr/m ²
Certification	GOTS

Three new colors have been added to the sweatshirt collection. GOTS certified and with a density of 400 g/m², this sweatshirt offers a soft and breathable texture, perfect for everyday wear. Its new logo patch on the chest adds a touch of vintage style that's also modern.



NEW



SWV08
Olive

NEW



SWV07
Mottled light grey

NEW



SWV06
Red



SWV05
Orange



SWV01
Green



SWE04
Burgundy



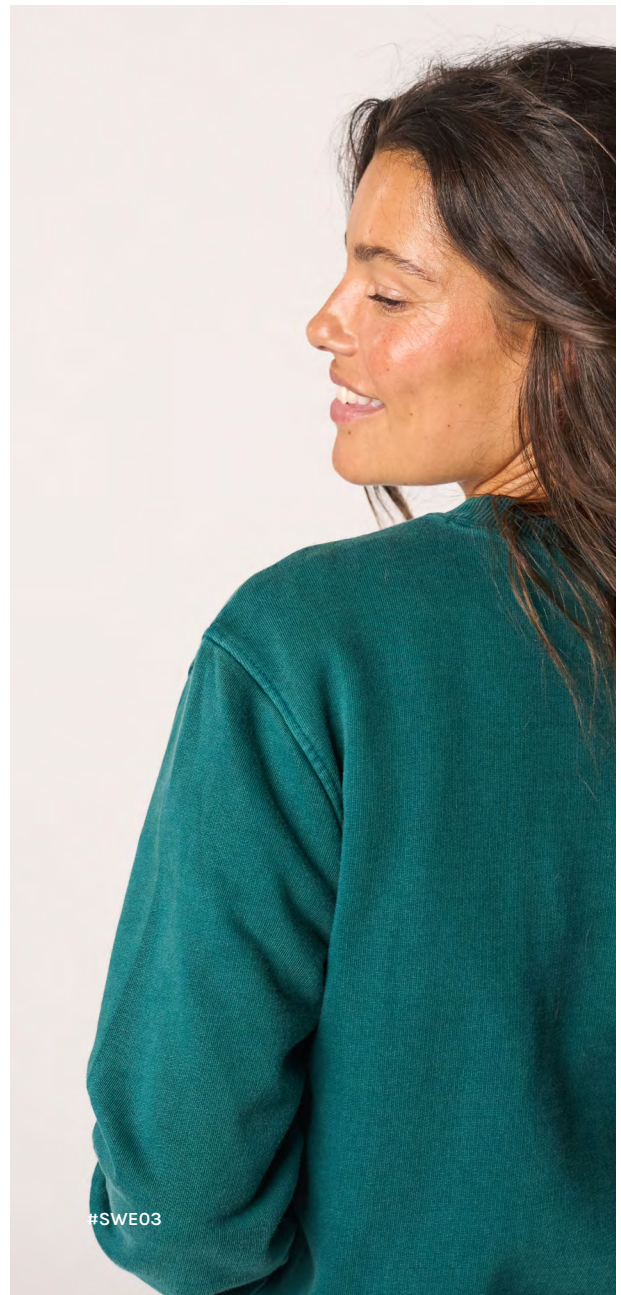
SWE03
Green



SWE02
Dark grey



SWE01
Purple





#POL

FLEECE SWEATSHIRTS

#POL04

Sizes	S to XXL
Composition	100% recycled polyester
Density	320 gr/m ²

Perfect for slightly cool summer evenings, our fleece sweatshirts featuring a button-down collar. Their straight cut and two velcro pockets make them perfect everyday companions. Available in four warm and trendy colors.



POLO4
Navy and green



POLO3
Red



POLO2
Navy



POLO1
White and blue



#POLO3

DENIM OVERSHIRTS



#SD05

Sizes	S to XXL
Composition	100% cotton
Density	370 gr/m ²
Certification	BCI™

Versatile and timeless, our overshirts can be worn as both a shirt and a jacket. Their robustness, combined with thoughtful details such as coconut shell buttons and adjustable cuffs, adds a unique touch of authenticity to every outfit.



SD05
Burgundy



SD04
Khaki



SD03
Navy



SD02
Denim stone



SD01
Denim bleach

KNITTED OVERSHIRTS



#SUR03

Sizes	S to XXL
Composition	85% recycled polyester, 10% viscose and 5% spandex
Densité	420 gr/m ²

Our overshirts feature a wrinkle-resistant knit that guarantees exceptional durability while remaining soft to the touch. With a straight cut and two chest pockets, they combine practicality and elegance with every look.



SUR06
Burgundy



SUR05
Dark green



SUR04
Black



SUR03
Khaki



SUR02
Brown



SUR01
Navy

#CHI

CHINO PANTS



#CHI01

Sizes	28 to 38 (US sizes)
Composition	97% cotton, 3% spandex
Density	230 gr/m ²
Certification	BCI™

Choose elegance with our BILLYBELT chino pants, available in four colors. Their tapered fit and flawless finishes make them a must-have, while the cotton-elastane blend ensures incredible softness and all-day comfort.



CH104
Ice blue



CH103
Beige



CH102
Khaki



CH101
Navy

UNISEX SHERPA JACKETS

#SHE47

Sizes	XS to XXL
Composition	100% polyester including 35% recycled
Density	340 gr/m ²
Certification	GRS

A bestseller this season, the sleeveless sherpa jacket is back in 4 new colors. It's a hit thanks to its comfort, breathable mesh lining, and contrasting details. A must-have wardrobe staple to add to your collection now!

NEW



SHE48
Khaki and navy

NEW



SHE47
Ivory and navy

NEW



SHE46
Blue and green

NEW



SHE45
Natural and khaki



SHE36
Natural et burgundy



SHE34
Ivory and blue

WOMEN SHERPA JACKETS



#SHE42

Sizes	S to L
Composition	100% polyester including 35% recycled
Density	340 gr/m ²
Certification	GRS

Combine comfort and style with our women's sherpa zip-up jacket, already a bestseller! Soft to the touch and lined with breathable, colorful mesh, it's now available in 5 vibrant new colors. A statement piece, perfect for elevating your everyday looks.

NEW



SHE44
Light pink

NEW



SHE43
Light blue

NEW



SHE42
Green

NEW



SHE41
Purple

NEW



SHE40
Ivory

BI-MATERIAL JACKETS



#SHE26

Sizes	S to XXL
Composition	100% polyester, including 35% recycled
Density	340 gr/m ² (sherpa)
Certification	GRS

Warmth, comfort, and style: our quilted sherpa jackets have it all. Available with long sleeves or sleeveless, they come in four trendy colors, featuring a contrasting chest pocket and a breathable mesh lining.





SHE28
Navy



SHE24
Navy



SHE27
Green



SHE23
Green



SHE26
Ivory and navy



SHE25
Black and green



SHE21
Black and green



#SHE24

WOVEN BELTS



#CB162

Sizes*	0, 1 and 2
width	3.2 cm
Composition	52% spandex, 48% polypropylene

*Pants size correspondence:
size 0 = 24 to 28, size 1 = 28 to 34, size 2 = 34 to 40 (US sizes).

An iconic and best-selling product, our eight-strand braided elastic belts are available in multicolored and solid colors. Their zinc alloy buckle combines lightness and strength, while the cowhide leather trim ensures durability and timeless style.



#CB

MULTICOLORED



#CB157

NEW



CB165
Casa

NEW



CB164
Cusco

NEW



CB163
Biarritz

NEW



CB162
Cape Town

NEW



CB161
Sóller

NEW



CB160
Vancouver

NEW



CB159
Willemstad

NEW



CB158
Cancun

NEW



CB157
Höfn

NEW



CB156
Melbourne

NEW



CB155
Marrakech

NEW



CB154
Lisboa



CB153
Chicago



CB152
Edmonton



CB151
Zurich



CB150
Belfast



CB149
Winnipeg



CB148
Warsaw



CB147
Göteborg



CB146
London



CB145
Helsinki



CB144
Bergen



CB143
Dublin



CB142
Istanbul



CB141
Amazonia 2



CB140
Sherwood



CB139
Durbuy



CB138
Haka



CB137
Cambridge



CB136
Narvik



CB134
Provence



CB133
Miami



CB132
Glasgow



CB131
Ambleuse



CB130
Palmira



CB129
Knokke



CB128
Salzburg



CB125
Bruges



CB124
Caracas



CB123
Fezzano



CB121
Beijing



CB120
Sandefjord



CB108
Frenchy



CB107
Retba



CB106
Tanzania



CB104
Quebec



CB103
Nazaré



CB102
Katla



CB100
Kyoto



CB92
Izamal



CB88
Kiruna



CB83
Oxford



CB38
Vienna



CB37
Seoul



CB32
Split



CB29
Ansterdam



CB16
Havana



CB14
Bogota



CB02
Panama



#CB164



PLAIN



NEW



CM98
Anthracite grey

NEW



CM97
Serenity

NEW



CM96
Emerald green

NEW



CM95
Ercolano orange

NEW



CM94
Cherry tomato

NEW



CM93
Old pink



CM92
Mustard



CM91
Wine red



CM90
Seram blue



CM89
Plum



CM88
Cold grey



CM87
Misty pink



CM86
Topaz yellow



CM84
Tangerine



CM83
Aqua green



CM82
Green pine



CM81
Pink magenta



CM79
Greek blue



CM78
Golf green



CM70
Bluet



CM69
Dark forest



CM68
Deep water



CM67
All black



CM43
Green army



CM34
Coco white



CM24
Taupe beige



CM16
Khaki



CM13
Fuschia pink



CM11
Black licorice



CM09
Brown leaf



CM08
Camel brown



CM06
Flannel grey



CM04
Navy



CM03
Slate blue



CM02
Sandy beige



CM01
Air force blue



WEBBING BELTS



Sizes*	90, 100 and 110
width	3.5 cm
Composition	85% polyester, 15% cotton

*Pants size correspondence:
size 90 = 28 to 30, size 100 = 32 to 34, size 110 = 34 to 36 (US sizes)

The webbing belts are adjustable and provide ideal support for all body types. With their cowhide leather finish and zinc-alloy buckle, they offer remarkable durability and a refined style.



CS12
Léon



CS11
Roland



CS10
Gabin



CS09
Jules



CS08
César



CS07
Gaston



CS06
Marcel



CS05
Hector



CS04
Marius



CS02
Achille



CS01
Jacques

WOMEN LEATHER BELTS

#CFC02

Sizes*	75, 85 and 95
Width	3 cm
Composition	100% cowhide leather

*Pants size correspondence :
size 75 = 24 to 26, size 85 = 28 to 30, size 95 = 32 to 34 (US sizes).

Discover the new collection of women's belts that combine elegance and character. Six leather models, available in three sizes, offer a timeless and refined style.

NEW



CFC06
Zebra

NEW



CFC05
Leopard

NEW



CFC04
Brown

NEW



CFC03
Glossy black

NEW



CFC02
Silver

NEW



CFC01
Gold



#CFC06

WOMEN WOVEN BELTS

#CF24



Sizes*	One size
Width	3 cm
Composition	52% spandex, 48%polypropylene

BILLYBELT marks the return of the braided belt for women with 7 new colors. A more feminine buckle and a redesigned width for a perfect look. Available in one size.

*Fits pants size 26 to 34 (US sizes)

NEW



CF28
Pink

NEW



CF27
Olive

NEW



CF26
Sky blue

NEW



CF25
Purple

NEW



CF24
Burgundy

NEW



CF23
Navy

NEW



CF22
Beige



#CF28

BOXER SHORTS



#CA108

Sizes	S to XXL
Composition	100% organic cotton
Density	110 gr/m ²
Certification	GOTS

These GOTS-certified organic cotton boxer shorts offer exceptional everyday comfort. Soft, breathable, and featuring a built-in jockstrap, they guarantee perfect support without compression, for a pleasant feel and optimal fit all day long.



NEW



CA114
Billychill

NEW



CA113
Summer ride

NEW



CA112
Coco loco

NEW



CA111
Eyeconic

NEW



CA110
Flash

NEW



CA109
Sardine

NEW



CA108
Dolce vita

NEW



CA107
Windsurf



CA106
Walrus



CA105
Brown bear



CA104
Classico



CA103
Penguin



CA102
Pine forest



CA101
Camper



CA100
Hunter



CA98
Valentin



CA97
Billy pop



CA93
Wimbledon



#CA110

BOXER BRIEFS



#BO94

Sizes	S to XXL
Composition	95% organic cotton, 5% spandex
Density	180 gr/m ²
Certification	GOTS

With their ergonomic cut, these boxer briefs offer complete freedom of movement. The anti-chafing elastic waistband and flat seams, which prevent rubbing, ensure optimal comfort throughout the day, for uncompromising support.



NEW



B099
Seagull

NEW



B098
Sloth

NEW



B097
Roadtrip

NEW



B096
Cassette

NEW



B095
Billycool

NEW



B094
Suneyes

NEW



B093
Corgi

NEW



B092
Land sailer



B091
Kinai



B090
Freya



B089
Marcel



B088
Glacier



B087
Adventurer



B086
Billy purple



B085
Retro



B082
Checked



B080
Riviera



B079
Citrus



B077
Seahorse



#B095

#MEN

MEN SOCKS



#TE30

Size	One size (41-46 FR sizes)
Composition*	80% combed cotton, 17% nylon, and 3% spandex
Certification	OEKO-TEX®
Minimum qty	3 pieces / color

*Different composition for bamboo socks

Our men's combed cotton socks combine natural materials, softness, and meticulous finishing. Hand-linked and reinforced at the toe and heel, they offer lasting comfort and a distinctive style for everyday wear. A wardrobe essential, both high-quality and easy to incorporate.



#CHA

ANIMALS



#CHA34

NEW



CHA38
Whale

NEW



CHA37
Sloth

NEW



CHA36
White panda

NEW



CHA35
Crab

NEW



CHA34
Toco

NEW



CHA33
Corgi



CHA32
Walrus



CHA30
Penguin



CHA28
Marcel



CHA27
Bear



CHA25
Pig



CHA24
Goose



CHA22
Gull



CHA17
Lobster

#CHL

PATTERNED



#CHL46

NEW



CHL47
San Diego

NEW



CHL46
California

NEW



CHL45
Transats

NEW



CHL44
Boombox

NEW



CHL43
Mehari

NEW



CHL42
Scooter



CHL41
Red pist



CHL40
Skier



CHL37
Camper



CHL36
Road trip



CHL35
Bicycle



CHL26
Saguaro



#TE

RETRO

#TE33

NEW



TE33

Dark blue, ivory and green striped

NEW



TE32

Khaki, red and navy striped

NEW



TE31

Light blue, red and navy striped

NEW



TE30

Brown, ivory and blue striped

NEW



TE29
White, orange and blue striped



TE28
Purple, blue and white striped



TE27
White, red and blue striped



TE26
Green, orange and white striped



TE25
Grey, blue and yellow striped



TE24
Beige, green and purple striped



TE21
Red, green and beige striped



TE08
Burgundy, beige striped



TE07
Beige, green and black striped



TE06
White, red and blue striped



TE03
Duck green, beige striped



TE01
Blue, white striped

#KRO

CHECKED



#KRO14

NEW



KR015
Imola

NEW



KR014
Melbourne

NEW



KR013
Boavista

NEW



KR012
Riverside



KR011
Marina Bay



KR010
Phoenix



KR009
Bakou



KR007
Silverstone



KR005
Hunaudières



KR004
Brooklands



KR001
Beach race

#RA/#RL

STRIPED



#RA75

NEW



RA75
Pomerol

NEW



RA74
Garden party

NEW



RA73
Seaside

NEW



RA72
Forest



RA71
Frog



RA70
Rock



RA69
Burgundy



RA68
Countryside



RA67
Atlantica



RA65
Urban



RA10
Khaki



RA07
The 33

NEW



RL47
Petrol blue, yellow striped

NEW



RL46
Beige, brown striped

NEW



RL45
Blue, grey striped

NEW



RL44
Red, beige striped



RL43
Blue, sky blue striped



RL41
Mottled green, purple striped



RL40
Beige, burgundy striped



RL39
Dark green, grey striped



RL34
Red, white striped



RL32
Beige, blue striped



RL28
Navy, beige striped



#RL44

#FA

SQUARE



#FA67

NEW



FA68
Starry night

NEW



FA67
Pink



FA66
Khaki



FA65
Grey



FA64
Wine red



FA63
Jeans



FA57
Mysterio



FA56
Pop



FA55
Peach



FA53
Natural



FA11
Black

#U/UF

PLAIN



#UF13

NEW



UF16
Mottled burgundy

NEW



UF15
Mottled dark brown

NEW



UF14
Mottled red

NEW



UF13
Mottled green



UF12
Mottled brown



UF11
Purple



UF10
Grey



UF09
Olive



UF02
Mottled navy



UF01
Mottled green



U31
Dark khaki



U29
Light beige



U27
English green



U25
Chestnut



U10
Mottled blue



U07
Red pomegranate



U03
Mouse grey



U02
Black licorice



U01
Navy





#CBA

BAMBOO



#CBA12

Composition	80% bamboo, 17% nylon and 3% spandex
-------------	---

Ultra soft, breathable and naturally antibacterial, bamboo socks ensure optimal comfort from morning to night.

NEW



CBA12
Orange

NEW



CBA11
Grey



CBA10
Burgundy



CAB09
Brown



CBA08
Dark green



CBA07
Mottled blue jean



CBA05
Mottled blue



CBA04
Mottled light green



CBA03
Navy



CBA02
Grey



CBA01
Black

#SUF/SU/SR/SRF

ANKLE



#SUF02

NEW



SUF03
Mottled green

NEW



SUF02
Mottled beige

NEW



SUF01
Mottled sky blue



SU15
White



SU14
Dark blue



SU10
Mottled light grey



SU09
Black



SR22
Blue, white striped



SRF08
White, blue striped



SRF06
Khaki, beige striped



SRF05
Beige, red striped



SRF04
Navy, white striped

#CMH

MID-CUT



#CMH04



CMH07
White, blue striped*



CMH06
Khaki, beige striped



CMH04
Green, orange striped



CMH03
Purple, yellow striped



CMH01
Navy, white striped

#CH

HERRINGBONE



#CH41



CH42
Bluebird



CH41
Emerald



CH40
Mirage



CH39
Dune



CH38
Marine mist



CH37
Spruce



CH36
Forest flash

#CL

THICK COTTON



#CL48

Composition	88% cotton, 9% polyester and 3% spandex
-------------	--

Warm, soft, comfortable, and full of character, they are the perfect accessory to showcase your style every day.



CL50
Columbia



CL49
MIT



CL48
Berkeley



CL47
Bath



CL46
St Andrews



CL45
Brown



CL44
Ash



CL43
Dartmouth



CL39
UCLA



CL38
Yale

WOOL



#W008

Composition	56% nylon, 24% wool, 18% polyester and 2% spandex
-------------	--

Thick, high-cut, and cozy, our wool socks are perfect for braving the winter.



W010
Blue



W009
Brown



W008
Beige



W007
Green



W006
Mottled grey



W001
Navy

WOMEN SOCKS



#FFL36

Sizes	One size (37-40 FR sizes)
Composition*	80% combed cotton, 17% nylon, and 3% spandex
Certification	OEKO-TEX®
Minimum qty	3 pieces / color

*Different composition for tennis, vintage and animal socks

Our women's combed cotton socks are all about softness and style. With their varied patterns, meticulous finishes, and reinforced toes and heels, they complement your outfits with style while offering lasting everyday comfort.



ANIMALS



#FFL37

Composition	38% combed cotton, 37% polyester, 22% nylon and 3% spandex
-------------	--

Shine with our leopard, zebra or glittery cow socks! Bold and stylish, they add a sparkling touch to your outfits.

NEW



FFL38
Cow, black and white

NEW



FFL37
Cow, brown and beige

NEW



FFL36
Zebra, black and beige

NEW



FFL35
Zebra, green and white

NEW



FFL34
Zebra, burgundy and light burgundy

NEW



FFL33
Zebra, purple and white

NEW



FFL32
Zebra, black and brown

NEW



FFL31
Zebra, red and pink

NEW



FFL10
Zebra, beige and brown

NEW



FFL09
Zebra, black and white

NEW



FFL29
Leopard, white and green



FFL28
Leopard, navy and blue

NEW



FFL30
Leopard, orange and pink

NEW



FFL27
Leopard, brown and old pink

NEW



FFL26
Leopard, beige and purple

NEW



FFL25
Leopard, pink and blue

NEW



FFL24
Leopard, ecru and wine red

NEW



FFL23
Leopard, light green and orange



FFL21
Leopard, white and blue



FFL20
Leopard, red



FFL18
Leopard, yellow



FFL17
Leopard, olive green



FFL16
Leopard, blue



FFL13
Leopard, grey



FFL03
Leopard, beige



FFL02
Leopard, khaki



FFL01
Leopard, black



#FFL30

#FMO

CHECKED



#FM029

NEW



FM029
Purple and light purple

NEW



FM028
Blue and sky blue

NEW



FM027
Purple and pale yellow

NEW



FM026
Pink and peach

NEW



FM025
Green and white



FM018
Beige and light blue



FM017
Ecru and dusty pink



FM016
Pink and white



FM015
Green and pink



FM004
Yellow and white



FM003
Red and pink



FM001
Khaki and blue

#FMO

STRIPED



#FMO20

NEW



FM024
Muse

NEW



FM023
Chill

NEW



FM022
Peace

NEW



FM021
Amour

NEW



FM020
Summer

NEW



FM019
Love



FM013
Mojito



FM012
Plum



FM011
Smile



FM006
Amour

#FTE

TENNIS



#FTE07

Composition	70% coton, 27% polyamide and 3% spandex
-------------	--

For a retro sporty look, choose our tennis socks available in 5 new colors.

NEW



FTE11
Ecru and khaki

NEW



FTE10
Red and ecru

NEW



FTE09
Pink and grey

NEW



FTE08
Light heather grey and blue

NEW



FTE07
Blue and pink



FTE06
Green and pink



FTE05
Ecru and burgundy



FTE04
Pink and red



FTE03
Purple and green



FTE02
Brown and pink



FTE01
Ecru and purple

VINTAGE

#FPA23

Composition 48% combed cotton, 40% polyester, 9% metallic fibers
and 3% spandex

NEW



FPA27
Beige

NEW



FPA26
Pink

NEW



FPA25
Brown

NEW



FPA24
Grey

NEW



FPA23
Mustard

NEW



FPA22
Blue



FPA21
Olive



FPA20
Electric blue



FPA19
Mint



FPA18
Old pink



FPA17
Duck blue



FPA16
Brick



FPA14
Red



FPA04
Light pink



FPA01
Burgundy

#FC

HEART



#FC15



FC15
Navy and lilac



FC14
Olive and turquoise



FC13
White and red



FC12
Brown and red



FC11
Pink and green



FC09
White and green



FC07
Olive green and pink



FC01
Khaki and burgundy

#CP

GLITTER



#CP31

NEW



CP34
Neon pink

NEW



CP33
Duck blue

NEW



CP32
Orange

NEW



CP31
Brown

NEW



CP30
Pink

NEW



CP29
Green



CP28
Black multico



CP27
Purple



CP26
Blood orange



CP25
Wine



CP23
Ecru



CP21
Navy



CP20
Rosewood



CP19
Khaki



CP13
Copper



CP08
Mineral black



CP02
Beige



#CP32



ANKLE

#SFW10

Composition 38% combed cotton, 37% polyester,
22% nylon and 3% spandex

NEW



SFW22
Cow, brown and beige

NEW



SFW21
Cow, black and white

NEW



SFW20
Zebra, black and beige

NEW



SFW19
Zebra, green and white

NEW



SFW18

Zebra, burgundy and light burgundy

NEW



SFW17

Zebra, purple and white

NEW



SFW16

Zebra, black and brown

NEW



SFW15

Zebra, red and pink

NEW



SFW14

Leopard, orange and pink

NEW



SFW13

Leopard, white and green

NEW



SFW12

Leopard, brown and old pink

NEW



SFW11

Leopard, navy and yellow

NEW



SFW10

Leopard, beige and purple

NEW



SFW09

Leopard, pink and blue

NEW



SFW08

Leopard, ecru and wine

NEW



SFW07

Leopard, light green and orange

NEW



SP20
Duck blue

NEW



SP19
Green

NEW



SP18
Pale pink



SP17
Pink



SP16
Beige



SP15
Purple



SP10
White and gold



SP05
Navy



SP01
White and silver





#FLA

WOOL

#FLA14

Composition

28% acrylic, 28% nylon, 22% wool, 17% polyester, 3% spandex and 2% angora

Thick, warm, and soft, our women's wool socks are perfect for facing winter with style.



FLA17
Burgundy



FLA16
Red



FLA15
Green



FLA14
Orange



FLA13
Pink



FLA07
Purple



FLA06
Beige



FLA05
Dark grey



FLA01
Black

KIDS SOCKS



#CKF02 / CCG02

Sizes	27-30 and 31-34 (FR sizes)
Composition	80% combed cotton, 17% nylon and 3% spandex
Certification	OEKO-TEX®
Minimum qty	3 pieces / color

BILLYBELT children's socks bring comfort, style, and fun to everyday life. Available in checks, retro or animal patterns, they combine softness, durability, and personality. OEKO-TEX certified and hand-linked for a refined finish, they come in two sizes (27-30 and 31-34, FR sizes) for a perfect fit on every adventure.



BOYS SOCKS



NEW



CMG03
Transat

NEW



CMG02
Scooter

NEW



CMG01
Mehari

NEW



CAG02
Corgi

NEW



CAG01
Crab

NEW



CRG02
White, blue and red striped

NEW



CRG01
Bleu, khaki and white striped

NEW



CCG02
Boavista

NEW



CCG01
Riverside

#CMF/CLF/CKF

GIRLS SOCKS



#CMF02

NEW



CMF03
Peace

NEW



CMF02
Love

NEW



CMF01
Summer

NEW



CLF03
Leopard, red and blue

NEW



CLF02
Leopard, navy and yellow

NEW



CLF01
Leopard, beige

NEW



CKF03
Purple and pale yellow

NEW



CKF02
Pink and peach

NEW



CKF01
White and green

MEN COTTON SCARVES



#ECF27

Dimensions	180 x 70 cm
Composition	100% organic cotton
Density	55 gr/m ²
Certification	GOTS
Minimum qty	3 pieces / color

Elevate your style with our GOTS-certified organic cotton scarves. Seven new unique and colorful prints to add a touch of elegance to all your outfits. Soft on the skin and environmentally friendly, they're the perfect accessory for a chic and responsible look.

NEW



ECF27
Naples

NEW



ECF26
Corfou

NEW



ECF25
Sevilla

NEW



ECF24
Crete

NEW



ECF23
Porto

NEW



ECF22
Berlin

NEW



ECF21
Valencia



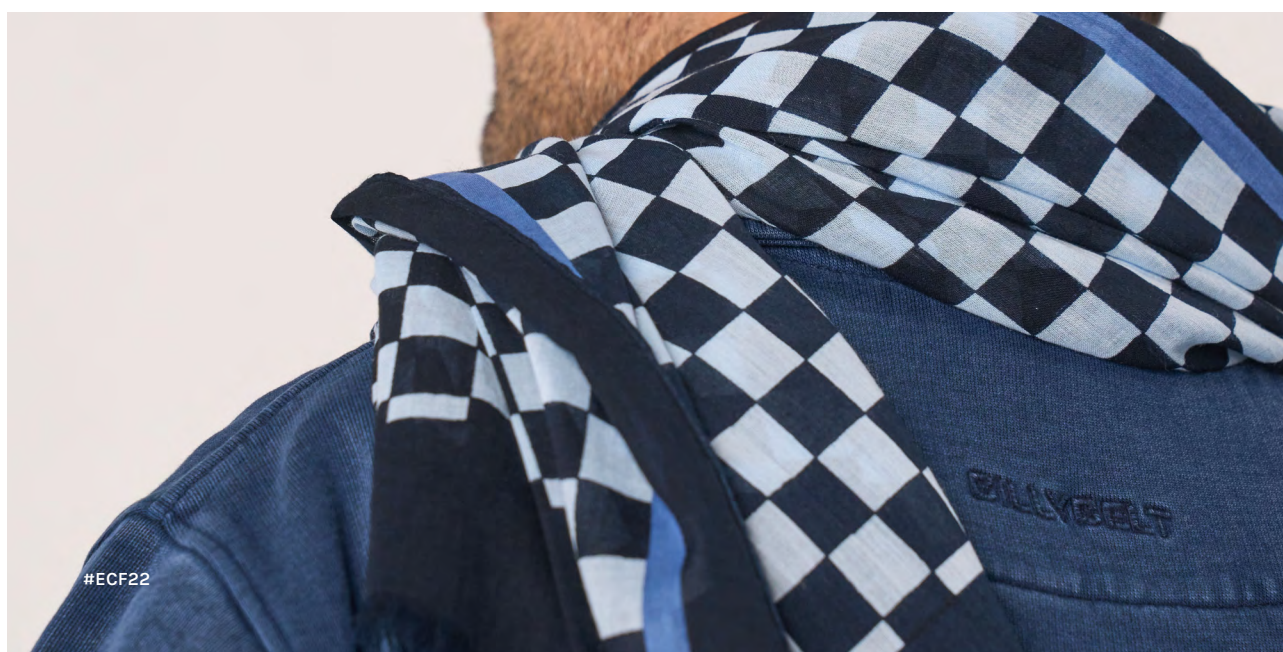
ECF20
Biarritz



ECF19
Milano



ECF18
Bristol





ECF17
Nice



ECF16
Everglades



ECF15
Dinard



#ECF23

MEN WOOL SCARVES

#ECL08

Dimensions	185 x 70 cm
Composition	100% wool
Certification	OEKO-TEX®
Minimum qty	3 pieces / color

Wrap yourself in comfort with our incomparably soft wool scarves. They offer perfect warmth for cool days, while being free of harmful substances. A chic and responsible winter essential.



ECL12
Eliott



ECL11
Marceau



ECL10
Felix



#ECL11



ECL09
Tanguy



ECL08
Jean



ECL07
Gaspard



ECL05
Victory



WOMEN SMALL COTTON SCARVES



#WBC04

Dimensions	70 x 70 cm
Composition	100% organic cotton
Density	80 gr/m ²
Certification	GOTS
Minimum qty	3 pieces / color

You loved them this winter, and now they're back in 100% organic cotton. Discover our 6 unique prints to add a twist to your spring looks.

NEW



WBC06
Romane - Green

NEW



WBC05
Romane - Ecru

NEW



WBC04
Paola - Purple

NEW



WBC03
Paola - Orange

NEW



WBC02
Lise - Blue

NEW



WBC01
Lise - Red



WOMEN COTTON SCARVES



#WFC09

Dimensions	100 x 100 cm
Composition	100% organic cotton
Density	80 gr/m ²
Certification	GOTS
Minimum qty	3 pieces / color

Soft and lightweight, these women's scarves are the essential accessory for a chic and relaxed look in any season. Available in three new prints, they add the perfect touch to enhance all your outfits.



NEW



WFC11
Lise - Khaki

NEW



WFC10
Romane - Navy

NEW



WFC09
Paola - Ecru



#WFC09



WFC06
Servane



WFC05
Hélène



WFC04
Célestine



WFC03
Suzanne



WFC02
Jade

CAPS



#CAT04

Sizes	One size
Composition	100% cotton
Certification	OEKO-TEX®
Minimum qty	3 pieces / color

The new trucker caps combine style and everyday comfort. Adjustable and breathable, they adapt to all seasons and all styles. One size fits all, available in 6 colors.

NEW



CAT06
Khaki

NEW



CAT05
Purple

NEW



CAT04
Yellow and green

NEW



CAT03
Blue and red

NEW



CAT02
Pink and green

NEW



CAT01
Ecru and blue



#CAT01



#CAV09

Sizes	One size
Composition	100% cotton
Certification	OEKO-TEX®
Minimum qty	3 pieces / color

BILLYBELT caps combine everyday style and comfort. Trucker, corduroy, or washed cotton — each model brings its own character. Adjustable and breathable, they're designed for all seasons and all styles. One size, available in multiple colors.



CAV09
Dark green



CAV08
White



CAV06
Black



CAV05
Orange



CAV04
Purple



CAV03
Blue

KIDS CAPS



#CTK01

Sizes	One size
Composition	100% cotton
Certification	OEKO-TEX®
Minimum qty	3 pieces / color

Kids' trucker caps complete a look for youngsters with style and comfort. Lightweight, breathable, and adjustable, they're perfect for all their adventures. Their embroidered patch with a colorful logo echoes the adult models, creating a parent-child duo full of character. Available in 3 colors, one size fits all.

NEW



CTK03
Blue and red

NEW



CTK02
Pink and green

NEW



CTK01
Ecru and blue



#CTK03

MEN SLIPPERS



#MUL11

Sizes	38-39 to 46-47 (FR sizes)
Composition	100% polyester Sole: rubber

BILLYBELT slippers, in corduroy or sherpa, offer exceptional comfort with their warm and soft interior. Available in 6 colors, they combine relaxation and style, featuring a rubber sole and a colorful logo.



MUL12
Green checks



MUL11
Navy sherpa



MUL10
Camel sherpa



MUL08
White sherpa



MUL05
Electric blue velvet



#MUL12

#MUL

WOMEN SLIPPERS



#MUL14

Sizes	36-37 to 40-41 (FR sizes)
Composition	100% polyester Sole: rubber

Five prints to keep your feet warm. Discover our women's sherpa or velvet slipper styles, available in sizes 36-37 to 40-41 (FR sizes).



MUL14
Cow sherpa



MUL13
Brown sherpa



MUL09
White sherpa



MUL07
Pink velvet

SHOPPING BAGS



#CAB01

Dimensions	35 x 46 x 20 cm
Composition	100% organic cotton
Certification	GOTS

The new tote bags combine style and everyday practicality. Made from organic cotton, they come in two paisley print versions and three striped versions. Their generous size and large interior pocket make them as functional as they are elegant. A colorful BILLYBELT logo label adds the finishing touch.

NEW



CAB05
Striped, green

NEW



CAB04
Striped, blue

NEW



CAB03
Bandana print, multico

NEW



CAB02
Bandana print, orange

NEW



CAB01
Striped, purple and ecru

#SAD

BACKPACKS



#SAD34

Dimensions	48 x 28 x 12 cm
Volume	25/30 liters
Weight	800 gr
Composition	100% recycled polyester*

*The SAD30 is made of non-recycled polyester.

The roll-top backpack is the perfect companion for urban adventurers. Water-repellent and ultra-durable, it protects your belongings while offering ample storage capacity and a 14-inch laptop sleeve. Available in 8 colors (including one waterproof option), it combines practicality with a sleek style.



NEW



SAD34
Green and ivory

NEW



SAD33
Purple and burgundy

NEW



SAD32
Khaki and black





SAD30
Black waterproof



SAD29
Taupe



SAD28
Black and khaki



SAD27
Khaki and navy



SAD24
Slate and orange

#DUF

DUFFLE BAGS



#DUF06

Dimensions	27 x 52 x 26 cm
Volume	37 liters
Composition	100% polyurethane Coating: 100% polyester

Waterproof and durable, the duffle bag goes wherever you do weekend breaks, getaways, or long journeys. Its large capacity adapts to all your needs, and the exterior pocket keeps your essentials within easy reach. A reliable and stylish companion for moving without compromise.



DUF06
Navy



DUF05
Yellow



DUF02
Black



DUF01
Khaki



#DUF05

WASH BAGS



#TDT16

Dimensions	13 x 21 x 11 cm
Composition	100% recycled polyester*

This wash bag, made from 100% recycled polyester, is the perfect accessory for all travelers. Compact and practical, it goes everywhere with you. Its large interior pocket makes it easy to organize all your essentials. Discover the 3 new colors this season.

*The TDT04 model is made for non-recycled polyester.

NEW



TDT16
Green and ivory

NEW



TDT15
Purple and burgundy

NEW



TDT14
Khaki and black



TDT13
Red and blue



TDT12
Orange and green



#TDT17

Dimensions	12 x 25 x 21 cm
Composition	100% polyurethane

Compact yet ultra-functional, this PU wash bag is the perfect companion for all your travels. Its large interior pocket maximizes storage. Completely waterproof, it combines style and practicality to meet all your needs.



TDT17
Navy



TDT03
Black



TDT02
Yellow



TDT01
Khaki



#TDT02

WALLETS



#PM02

Dimensions	9 x 12.5 x 1.5 cm
Composition	100% polyester

Compact and lightweight, this polyester wallet fits anywhere. Practical, it features a large compartment for coins and multiple card slots. A smart design for everyday use, easy to carry without bulk.



PM04
Navy and green



PM03
Black



PM02
Multicolored



PM01
Khaki



#PM03

SOCKS SETS



Minimum qty	3 pieces / model
-------------	------------------

(Re)discover our 8 sock gift sets, ready to give for men and women, each containing 3 carefully coordinated pairs.



MEN SOCKS SETS



CCH04
Off the beaten path



CCH03
Born to be retro



CCH02
Carve your path



CCH01
Ride to the horizon

WOMEN SOCKS SETS



CCFO4
Enjoy the sweetness



CCFO3
Dive into nature



CCFO2
Sparkle with style



CCFO1
Wild at heart

POS ADVERTISING



PRE09	Belts, boxer briefs or boxer shorts furniture
Dimensions	210 x 68.5 x 24.5 cm

Free under conditions.



PRE07	Socks display
Dimensions	57 x 30 x 30 cm

Free under conditions.



PRE05	Clothes rack
Dimensions	150 x 100 x 50 cm

Free under conditions.



PRE03	Boxer briefs or socks display
Dimensions	63 x 60 x 27.5 cm

Free under conditions.



PRE01	Boxer shorts or belts display
Dimensions	49 x 20 x 33.5 cm

Free under conditions.



BXD021	Metallic pink duo box ⁽¹⁾
Dimensions	110 x 104 x 84 mm



BXD020	Orange and pink checked duo box ⁽¹⁾
Dimensions	110 x 104 x 84 mm



BXD019	Red and pink striped duo box ⁽¹⁾
Dimensions	110 x 104 x 84 mm



BXD018	Red duo box ⁽¹⁾
Dimensions	110 x 104 x 84 mm



BXD017	Royal blue duo box ⁽¹⁾
Dimensions	110 x 104 x 84 mm



BXD016	Green and navy checked duo box ⁽¹⁾
Dimensions	110 x 104 x 84 mm



BXD001	Black duo box ⁽¹⁾
Dimensions	110 x 104 x 84 mm

⁽¹⁾ 2 or 3 pairs of socks, 1 belt + 1 pair of socks, or 2 belts.



BX3C01	Box of 3 or 4 boxers shorts
Dimensions	90 x 210 x 215 mm



BX3B01	Box of 3 boxers briefs
Dimensions	135 x 175 x 165 mm



BX5B01	Box of 5 boxers briefs
Dimensions	135 x 175 x 165 mm



BXS01	Small backpack ⁽³⁾
Dimensions	110 x 165 x 104 mm

⁽³⁾ 4 to 5 pairs of socks, or 2 pairs of socks + 1 belt, or 1 boxer short + 1 pair of socks + 1 belt.



BXGS01	Large backpack ⁽⁴⁾
Dimensions	95 x 275 x 108 mm

⁽⁴⁾ 6 to 7 pairs of socks, or 2 boxers shorts + 2 pairs of socks, or 1 t-shirt + 1 boxer shorts.



BXB001	Berlingots ⁽⁵⁾
Dimensions	215 x 150 mm

⁽⁵⁾ Pack of 10 units.

STARTING ADVICE



NEED ADVICE ON YOUR ASSORTMENT ?

To help you get started, here's a selection of our most popular and beloved products. Ready for the BILLY-BELT adventure?

WOVEN BELTS

Multicolored - Bogota	CB14	Plain - Sand beige	CM02
Multicolored - Knokke	CB129	Plain - Navy	CM04
Multicolored - Lisboa	CB154	Plain - All black	CM67
Multicolored - Cancun	CB158	Plain - Cherry tomato	CM94
Multicolored - Casa	CB165	Plain - Serenity	CM97

UNDERWEAR

Boxer brief - Corgi	B093	Boxer shorts - Windsurf	CA107
Boxer brief - Billy cool	B095	Boxer shorts - Dolce Vita	CA108
Boxer brief - Cassette	B096	Boxer shorts - Sardine	CA109
Boxer brief - Roadtrip	B097	Boxer shorts - Eyeconic	CA111
Boxer brief - Seagull	B099	Boxer shorts - Summer ride	CA113

SOCKS

Animal - Corgi	CHA33	Retro - White, red and blue striped	TE06
Animal - Crab	CHA35	Retro - Light blue, red and navy striped	TE31
Patterned - Scooter	CHL42	Plain - Navy	U01
Patterned - California	CHL46	Plain - Light beige	U29
Checked - Riverside	KR012	Ankle - White	SU15

CLOTHES

Swim shorts - Sunset avenue	MDB14	Vintage sweatshirt - Red	SWV06
Swim shorts - Deep lagoon	MDB18	Velvet shorts - Dark green	SHV13
Sherpa jacket - Natural and khaki	SHE45	Cotton shorts - Denim blue	SHC01
Sherpa jacket - Khaki and navy	SHE48	Dolce Vita t-shirt - White	TSD03
Zip-neck sweatshirt - Navy	SWZ02	Roadtrip t-shirt - Khaki	TSR07

ACCESSORIES & LUGGAGE

Cotton scarf - Porto	ECF23	Backpack - Green and ivory	SAD34
Cotton scarf - Crete	ECF24	Duffle bag - Navy	DUF06
Trucker cap - Blue and red	CAT03	Wash bag - Khaki and black	TDT14
Trucker cap - Khaki	CAT06	Wash bag - Green and ivory	TDT16
Backpack - Khaki and black	SAD32	Wash bag - Navy	TDT17

WOMEN

Sleeveless sherpa - Ivory	SHE40	Small cotton scarf - Paola, purple	WBC04
Sleeveless sherpa - Pale pink	SHE44	Trucker cap - Pink and green	CAT02
T-shirt - White, sun embroidery	TSW01	Shopping bag - Striped, green	CAB05
T-shirt - Red, sun embroidery	TSW06	Woven belt - Pink	CF28
Small cotton scarf - Lise, red	WBC01	Leather belt - Leopard	CFC05



FALL-WINTER 2026 PRE-ORDERS

Get an exclusive first look at our **Fall-Winter 2026** pre-orders by scanning this QR code:

