

SPRING / SUMMER

2025

# BILLYBELT



<b>CLOTHES</b>	<b>06</b>	Vintage	100
Swim shorts	06	Zebra	102
Velvet shorts	10	Leopard	104
Cotton shorts	14	Wool	106
T-shirts	18		
Overshirts	22	<b>ACCESSORIES</b>	<b>108</b>
Sweatshirts	24	Men scarves	108
Chino pants	26	Women scarves	112
Cargo pants	28	Caps	116
Unisex sherpa jackets	30	Hats	120
Women sherpa jackets	32	Slippers	122
<b>BELTS</b>	<b>34</b>	<b>LUGGAGE</b>	<b>124</b>
Multicolored woven belts	36	Backpacks	124
Plain woven belts	40	Laptop bags	128
Woven belts with colored buckle and leather	44	Duffle bags	130
Webbing belts	46	Wash bags	132
		Wallets	136
<b>UNDERWEAR</b>	<b>48</b>	<b>POS ADVERTISING</b>	<b>140</b>
Boxer shorts	48	Displays	140
Boxer briefs	52	Packaging	144
<b>MEN SOCKS</b>	<b>56</b>	<b>STARTING ADVICE</b>	<b>146</b>
Ankle	58		
Mid-cut	60	<b>CONTACT US</b>	<b>148</b>
Retro	62		
Patterned	64		
Animal	66		
Checked	68		
Striped	70		
Square	74		
Herringbone	76		
Plain	78		
Bamboo	82		
Club	84		
Wool	86		
<b>WOMEN SOCKS</b>	<b>88</b>		
Ankle	90		
Checked	92		
Striped	94		
Heart	96		
Glitter	98		



#SS25

**BILLY  
BELT**



# 5 REASONS TO CHOOSE BILLYBELT ?



## EXCEPTIONAL QUALITY

Discover our wide range of clothing and accessories for men and women, made from carefully selected and certified materials.

## RESPONSIVE LOGISTICS

Benefit from fast 72-hour delivery, free of charge for orders over €800 excluding VAT, anywhere in Europe. Never miss an opportunity thanks to our reliable supply chain.

## DEDICATED CUSTOMER SERVICE

Our team of advisors and sales agents is at your disposal to guide you in your choice of assortments, according to your needs and budget.

## FLEXIBLE PAYMENT OPTIONS

Choose from our personalized payment options: direct debit, bank transfer or credit card. Choose the solution that suits you best.

## SUPPORT FOR IMPLEMENTATION

A wide selection of sales and merchandising items (displays, racks, gift boxes, hangers, easels, etc.) to enhance your product range.

# SWIM SHORTS



#MDB05

Sizes	S to XXL
Composition	100% recycled polyester
Density	160 gr/m <sup>2</sup>

Discover our swimming shorts equipped with UV protection and quick-drying. Their elasticated waistband and soft inner mesh guarantee perfect freedom of movement. Supplied in a reusable pouch, they're ideal for your days at the beach.



NEW



**MDB05**  
Azur

NEW



**MDB06**  
Redwood coast

NEW



**MDB07**  
Sunset splash

NEW



**MDB08**  
Surf session

NEW



**MDB09**  
Palm groove

NEW



**MDB10**  
Blooming beach





## VELVET SHORTS



#SHV07

Sizes	S to XXL
Composition	100% cotton
Density	360 gr/m <sup>2</sup>
Certification	BCI™

Dive into the world of BILLYBELT corduroy shorts. They offer a soft feel and perfect breathability, ensuring remarkable durability. The relaxed fit, coupled with an elasticated waistband and drawcord, guarantees a tailored fit.



BACK IN STOCK



**SHV01**  
Navy



**SHV03**  
Ivory



**SHV05**  
Yellow



**SHV06**  
Light blue



NEW



**SHV07**  
Light mauve

NEW



**SHV08**  
Anthracite

NEW



**SHV09**  
Khaki



#SHO

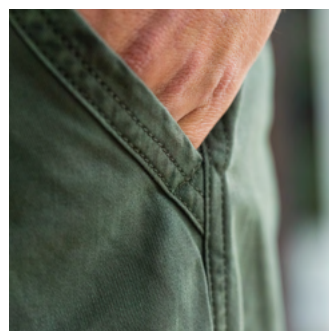
# COTTON SHORTS



#SH009

Sizes	28 to 38
Composition	100% organic cotton
Density	235 gr/m <sup>2</sup>
Certification	GOTS

Adopt a casual style with BILLYBELT organic cotton shorts. Designed with a straight cut and GOTS-certified fabric, they combine fashion and ethics. Careful finishing, including double stitching and an embroidered logo, adds a touch of elegance to every look.





**SH001**  
Khaki



**SH002**  
Navy



**SH005**  
Beige



**SH006**  
Orange



**SH007**  
Green



NEW



**SH008**  
Light blue

NEW



**SH009**  
Salmon pink



#SH008

# T-SHIRTS



#TSV09

Sizes	S to XXL
Composition	100% organic cotton
Density	180 gr/m <sup>2</sup>
Certification	GOTS

Look both casual and responsible with our new vintage t-shirts. Each model features unique prints or embroidery, adding a touch of originality to your style.





**TSV01**  
Mottled purple, sunset print



**TSV02**  
White, sunset print



**TSV03**  
Green, BILLYBELT embroidery



**TSV04**  
Navy, BILLYBELT embroidery

NEW



**TSV05**  
White, bicycle embroidery

NEW



**TSV06**  
Blue, BILLYCLUB print

NEW



**TSV07**  
Pink, bicycle print

NEW



**TSV08**  
White, surfer print

NEW



**TSV09**  
Light blue, surfer print

NEW



**TSV10**  
Orange, bicycle print

NEW



**TSV11**  
White, flower print

# OVERSHIRTS



#SD02

Sizes	S to XXL
Composition	100% cotton
Density	370 gr/m <sup>2</sup>
Certification	BCI™

Whether as a shirt or a jacket, our overshirts are both robust and timeless. Their careful details, like coconut shell buttons and adjustable cuffs, add undeniable authenticity.

NEW



**SD01**  
Denim bleach

NEW



**SD02**  
Denim stone

NEW



**SD03**  
Navy

NEW



**SD04**  
Khaki

NEW



**SD05**  
Burgundy

# SWEATSHIRTS



#SWV05

Sizes	S to XXL
Composition	100% organic cotton
Density	400 gr/m <sup>2</sup>
Certification	GOTS

Our new vintage sweatshirts are both robust and pleasantly soft. The embroidered logo yoke on the chest and the garment dye details add a unique touch to this timeless classic.



NEW



SWV01  
Green

NEW



SWV02  
Blue

NEW



SWV03  
Pink

NEW



SWV04  
Green water

NEW



SWV05  
Orange

# CHINO PANTS



#CHI02

Sizes	28 to 38
Composition	97% cotton, 3% spandex
Density	230 gr/m <sup>2</sup>
Certification	BCI™

Chino pants are the perfect combination of style and quality. Their tapered cut and impeccable finishing make them an essential for every man's wardrobe.



**CHI01**  
Navy



**CHI02**  
Khaki



**CHI03**  
Beige



**CHI04**  
Ice blue

# CARGO PANTS

#CAR05

Sizes	28 to 38
Composition	98% cotton, 2% spandex
Density	300 gr/m <sup>2</sup>
Certification	BCI™

Cargo pants combine softness and sturdiness and offer you a straight cut, ensuring optimum freedom of movement. You can easily store all your essentials with their multiple pockets.



**CAR01**  
Dark green



**CAR02**  
Navy



**CAR04**  
Camel



**CAR05**  
Taupe

## UNISEX SHERPAS

#SHE18

Sizes	XS to XXL
Composition	100% polyester including 35% recycled
Density	340 gr/m <sup>2</sup>

Unisex sherpa jackets offer incomparable softness and warmth. The velvet chest pocket, the mesh lining and the contrasting color details add a touch of originality to this wardrobe essential !



**SHE13**  
Khaki



**SHE16**  
Khaki



**SHE14**  
Pistachio



**SHE17**  
Pistachio



**SHE15**  
Bubblegum



**SHE18**  
Bubblegum

## WOMEN SHERPAS



#SHE19

Sizes	S to L
Composition	100% polyester including 35% recycled
Density	340 gr/m <sup>2</sup>

Wrap yourself in softness with our women's sleeveless sherpa jackets. Made from recycled polyester, they feel incredibly soft and pleasant against the skin. The leopard or zebra print mesh lining, combined with the colorful velvet pocket, add a touch of originality to this new feminine must-have.



BACK IN STOCK



SHE19  
Ivory



SHE20  
Black



#SHE20

## WOVEN BELTS



#CB134

Sizes*	0, 1 and 2
Width	3.2 cm
Composition	52% spandex, 48% polypropylene

Composed of eight braided strands, our elastic belts are available in a multicolored or plain version. The lightweight yet sturdy zinc alloy buckle combines perfectly with cowhide leather finishes for exceptional durability.

\*Pants size correspondence:  
size 0 = 24 to 28, size 1 = 28 to 34, size 2 = 34 to 40 (UK/US size).



#CB

**MULTICOLORED**



#CB133



**CB02**  
Panama



**CB14**  
Bogota



**CB16**  
Havana



**CB29**  
Amsterdam



**CB32**  
Split



**CB33**  
Berlin



**CB37**  
Seoul



**CB38**  
Vienna



**CB44**  
Lima



**CB83**  
Oxford



**CB88**  
Kiruna



**CB92**  
Izamal



**CB104**  
Quebec



**CB105**  
Kilimandjaro



**CB106**  
Tanzania



**CB107**  
Retba



**CB108**  
Frenchy



**CB113**  
Heraklion



**CB115**  
Auckland



**CB119**  
P  p  

BACK IN STOCK



**CB120**  
Sandefjord



**CB121**  
Beijing



**CB122**  
Victoria



**CB123**  
Fezzano

BACK IN STOCK



**CB124**  
Caracas



**CB125**  
Bruges



**CB126**  
Amazonia

NEW



**CB130**  
Palmira

NEW



**CB131**  
Ambleteuse

NEW



**CB132**  
Glasgow

NEW



**CB133**  
Miami

NEW



**CB134**  
Provence

NEW



**CB135**  
Rhodes

NEW



**CB136**  
Narvik

NEW



**CB137**  
Cambridge



#CM

**PLAIN**



#CM85





**CM01**  
Air force blue



**CM02**  
Sandy beige



**CM03**  
Slate blue



**CM04**  
Navy



**CM06**  
Flannel grey



**CM08**  
Camel brown



**CM09**  
Brown leaf



**CM11**  
Black licorice



**CM13**  
Fuschia pink



**CM16**  
Khaki



**CM24**  
Taupe beige



**CM34**  
Coco white



**CM43**  
Green army



**CM56**  
Caramel



**CM62**  
Lavander



**CM63**  
Eastern red



**CM70**  
Bluet



**CM73**  
Alaskan blue



**CM75**  
Peach pink



**CM76**  
Cardinal red



**CM77**  
Garnet



**CM78**  
Golf green



**CM79**  
Greek blue



**CM80**  
Yellow curry



**CM81**  
Pink magenta



**CM82**  
Green pine



**CM83**  
Aqua green



**CM84**  
Tangerine



**CM85**  
Cloud blue



**CM86**  
Topaz yellow



**CM87**  
Misty pink



# COLORED LEATHER AND BUCKLE





**CB100**  
Kyoto



**CB101**  
Orinoco



**CB102**  
Katla



**CB103**  
Nazare



**CB128**  
Salzburg



**CB129**  
Knokke

NEW



**CB138**  
Haka

NEW



**CB139**  
Durbuy

NEW



**CB140**  
Sherwood

NEW



**CB141**  
Amazonia 2



**CM67**  
All black



**CM68**  
Deep water



**CM69**  
Dark forest

# WEBBING BELTS



#CS11

Sizes*	90, 100 and 110
Width	3.5 cm
Composition	85% polyester, 15% cotton

\*Pants size correspondence:  
size 90 = 28 to 30, size 100 = 32 to 34, size 110 = 36 to 38 (UK/US size).

Webbing belts are characterized by optimum comfort, thanks to their soft, resistant material. Their customized fit adapts to all body shapes and provides perfect support. The cowhide leather finish and zinc alloy buckle guarantee outstanding durability.



**CS01**  
Jacques



**CS02**  
Achille



**CS03**  
Basile



**CS04**  
Marius



**CS05**  
Hector



**CS06**  
Marcel



**CS07**  
Gaston



**CS08**  
César



**CS09**  
Jules



**CS10**  
Gabin



**CS11**  
Roland



**CS12**  
Léon

#CA

# BOXER SHORTS



#CA98

Sizes	S to XXL
Composition	100% organic cotton
Density	110 gr/m <sup>2</sup>
Certification	GOTS

GOTS-certified organic cotton boxer shorts offer a cocoon of softness for everyday wear. Their fabric ensures a pleasant feel on the skin, while the integrated jockstrap provides optimum support without compression.







**CA57**  
Abstract geometry



**CA58**  
Monstera leaf



**CA60**  
Dots circle



**CA65**  
Tulum



**CA67**  
Graffiti



**CA75**  
Kariba



**CA78**  
Crazy daizy



**CA80**  
Rodeo



**CA83**  
Frammento



**CA87**  
Ducky



**CA88**  
Rovaniemi



**CA89**  
Tululup



**CA90**  
Tout schuss



**CA91**  
Margherita



**CA92**  
Citrus

NEW

NEW



**CA93**  
Wimbledon

NEW



**CA94**  
Back to school

NEW



**CA95**  
Flamingo

NEW



**CA96**  
Paimpol bay

NEW



**CA97**  
Billy pop

NEW



**CA98**  
Valentin

NEW



**CA99**  
Henri

# BOXER BRIEFS



#B080

Sizes	S to XXL
Composition	95% organic cotton, 5% spandex
Density	180 gr/m <sup>2</sup>
Certification	GOTS

The boxer briefs feature an ergonomic cut for optimum freedom of movement. The elastic waistband minimizes chafing, while flat seams prevent rubbing.





**B046**  
Banana leaf



**B052**  
Sinaï



**B053**  
Mozaïk



**B054**  
Mirage



**B055**  
Navy stripes



**B057**  
Reef



**B058**  
Saguaro



**B060**  
Buffalo green



**B063**  
Ottawa



**B064**  
Back to 80's



**B065**  
Azulejo



**B066**  
Totem



**B068**  
Green wild



**B069**  
Corazon



**B070**  
Cosmopolitan



**B071**  
Giraffe



**B072**  
Tropical



**B073**  
Teckel



**B074**  
Check mate



**B075**  
Highland



**B076**  
Flower power

NEW



**B077**  
Seahorse

NEW



**B078**  
Lobster

NEW



**B079**  
Citrus

NEW



**B080**  
Riviera

NEW



**B081**  
Valentin

NEW



**B082**  
Checked

NEW



**B083**  
Aloa

NEW



**B084**  
Billy red

# MEN SOCKS



#CHA24

Size	One size (41-46 FR sizes)
Composition*	80% combed cotton, 17% nylon and 3% spandex
Certification	OEKO-TEX®
Minimum qty	3 pieces / color

\*Different composition for bamboo socks.

Socks combine comfort, style and ethics. Made from natural materials, they are kind to the skin and the environment. Hand-knitting gives them exceptional durability, helping to reduce your ecological impact.





# ANKLE



#SRF08



**SU09**  
Black

BACK IN STOCK



**SU10**  
Mottled light grey

BACK IN STOCK



**SU14**  
Dark blue



**SU15**  
White



**SR04**  
Black, white striped



**SR14**  
Light blue, navy striped



**SR21**  
Turquoise, navy striped

NEW



**SR22**  
Blue, white striped



**SRF04**  
Navy, white striped

NEW



**SRF05**  
Beige, red striped

NEW



**SRF06**  
Khaki, beige striped

NEW



**SRF07**  
Orange, pink striped

NEW



**SRF08**  
White, blue striped

# MID-CUT





**CMH01**  
Navy, white striped



**CMH02**  
Light blue, beige striped



**CMH03**  
Purple, yellow striped



**CMH04**  
Green, orange striped

BACK IN STOCK



**CMH05**  
White, red and blue striped

NEW



**CMH06**  
Khaki, beige striped

NEW



**CMH07**  
White, blue striped

# RETRO



#TE23

BACK IN STOCK



**TE01**  
Blue, white striped

BACK IN STOCK



**TE03**  
Duck green, beige striped



**TE06**  
White, red and blue striped



**TE07**  
Mottled beige, green and black striped



**TE08**  
Burgundy, beige striped



**TE10**  
Beige, green and yellow striped



**TE12**  
Purple, beige striped



**TE14**  
White, orange and blue striped



**TE15**  
Yellow, white striped



**TE16**  
White, yellow and red striped



**TE17**  
Blue, green and yellow striped



**TE18**  
Mottled beige, black striped



**TE19**  
Khaki, beige striped

NEW



**TE20**  
Light blue, beige striped

NEW



**TE21**  
Red, green and beige striped

NEW



**TE22**  
White, blue striped

NEW



**TE23**  
Green, white striped

#CHL

# PATTERNED



#CHL34





**CHL19**  
Colorado



**CHL20**  
Arizona



**CHL21**  
Mexico



**CHL22**  
Yosemite



**CHL24**  
Vinicunca



**CHL26**  
Saguardo



**CHL27**  
Mont blanc



**CHL28**  
Van trip



**CHL29**  
Tout schuss

NEW



**CHL30**  
Cab



**CHL34**  
Surf

NEW



**CHL35**  
Bicycle

#CHA

# ANIMALS



#CHA25

BACK IN STOCK



**CHA17**  
Lobster

BACK IN STOCK



**CHA19**  
Frog

BACK IN STOCK



**CHA21**  
Duck

BACK IN STOCK



**CHA22**  
Gull

BACK IN STOCK



**CHA23**  
Dog

NEW



**CHA24**  
Goose

NEW



**CHA25**  
Pig

NEW



**CHA26**  
Cat

#KRO

CHECKED



#KRO06



**KRO01**  
Beach race



**KRO02**  
Bonneville



**KRO03**  
Tourist trophy



**KRO04**  
Brooklands



**KRO05**  
Hunaudières

NEW



**KRO06**  
Spa

NEW



**KRO07**  
Silverstone

NEW



**KRO08**  
Monza

# STRIPED



#RA62

BACK IN STOCK



RA07  
The 33



RA10  
Khaki



RA49  
Hazelnut



**RA54**  
Vibrant



**RA55**  
Tutti frutti



**RA56**  
Amethyst



**RA57**  
Adventurer



**RA58**  
Kilimandjaro



**RA59**  
Elementary



**RA60**  
Moka matcha

NEW



**RA62**  
Natural

NEW



**RA63**  
City

NEW



**RA64**  
Elegant

NEW



**RA65**  
Urban

NEW



**RA66**  
Bold

# WIDE STRIPED



#RL38



**RL14**  
Saffron, beige striped



**RL22**  
Khaki, green striped



**RL25**  
Mottled beige, blue striped





**RL26**  
Mottled purple, blue striped



**RL28**  
Navy, beige striped



**RL29**  
Blue, red striped



**RL30**  
White, black striped



**RL31**  
Green, yellow striped

NEW



**RL32**  
Beige, blue striped

NEW



**RL33**  
Blue, khaki striped

NEW



**RL34**  
Red, white striped

NEW



**RL35**  
Khaki, blue striped

NEW



**RL36**  
Pink, orange striped

NEW



**RL37**  
Beige, green striped

NEW



**RL38**  
Navy, white striped

#FA

# SQUARE



#FA60



**FA11**  
Black



**FA36**  
Ecru



**FA47**  
Brown



**FA48**  
Snow



**FA55**  
Peach



**FA56**  
Pop



**FA57**  
Mysterio



**FA58**  
Wasabi



**FA59**  
Pepper



**FA60**  
Saffron



**FA61**  
Paprika



**FA62**  
Ginger

#CH

# HERRINGBONE



#CH34

BACK IN STOCK



**CH27**  
Marmot



**CH28**  
Belle-île



**CH29**  
Hella



**CH31**  
Danish



**CH32**  
Broceliande



**CH33**  
Campana



**CH34**  
Sherwood



**CH35**  
Disko

#U/UF

# PLAIN



#UF07



**U01**  
Navy



**U02**  
Black licorice



**U03**  
Mouse grey



**U07**  
Red pomegranate



**U10**  
Mottled blue



**U22**  
Azurine



**U25**  
Chestnut



**U27**  
English green



**U29**  
Light beige



**U31**  
Dark khaki



**U33**  
Lavender



**U35**  
Orange



**UF01**  
Mottled green



**UF02**  
Mottled navy



**UF03**  
Mottled yellow



**UF04**  
Mottled khaki

NEW



**UF05**  
Mottled beige

NEW



**UF06**  
Mottled pink

NEW



**UF07**  
Mottled light blue

NEW



**UF08**  
Mottled dark green





#UF05

# BAMBOO



#CBA04

---

Composition    **80% bamboo, 17% nylon  
and 3% spandex**

---

Bamboo socks are made from bamboo fibers, providing softness and breathability for all-day comfort.

BACK IN STOCK



**CBA01**  
Black

BACK IN STOCK



**CBA02**  
Grey

BACK IN STOCK



**CBA03**  
Navy

NEW



**CBA04**  
Mottled light green

NEW



**CBA05**  
Mottled navy

NEW



**CBA07**  
Mottled blue jean

NEW



**CBA08**  
Dark green

# CLUB



#CL43

---

Composition    **88% cotton, 9% polyester  
and 3% spandex**

---

Thick cotton club socks add a retro British style to your look and ensure comfort and softness.



**CL27**  
Zen



**CL33**  
Kingston



**CL35**  
Cambridge



**CL36**  
Oxford



**CL38**  
Yale



**CL39**  
UCLA



**CL40**  
Oceanic



**CL41**  
Princeton



**CL42**  
Stanford



**CL43**  
Dartmouth



**CL44**  
Ash

#WVO

# WOOL



#W005

---

Composition    56% nylon, 24% wool, 18% polyester  
and 2% spandex

---

BILLYBELT wool socks, thick and mid-calf height, guarantee you warmth and comfort all winter long.



**W001**  
Navy



**W003**  
Khaki



**W004**  
Terracotta



**W005**  
Black



**W006**  
Mottled grey



#W001

## WOMEN SOCKS



#FFL19

Size	One size (37-40 FR sizes)
Composition*	80% combed cotton, 17% nylon and 3% spandex
Certification	OEKO-TEX®
Minimum qty	3 pieces / color

\*Different composition for vintage, leopard and zebra socks.

Women's socks offer a wide choice of colors and patterns, from ankle socks to glitter socks, not forgetting leopard or check prints. Made from natural materials such as combed cotton or wool, hand-knitted and reinforced at the toe and heel, they combine comfort and style.





#SRW/SFW/SP

# ANKLE



#SP15



**SRW01**  
White, silver striped



**SFW03**  
Leopard blue



**SFW04**  
Zebra white



**SFW05**  
Zebra pink



**SFW06**  
Zebra blue

BACK IN STOCK



**SP01**  
White and silver

BACK IN STOCK



**SP05**  
Navy

BACK IN STOCK



**SP10**  
White and gold

NEW



**SP15**  
Purple

NEW



**SP16**  
Beige

NEW



**SP17**  
Pink

# CHECKED



NEW



**FMO01**  
Khaki and blue

NEW



**FMO02**  
White and black

NEW



**FMO03**  
Red and pink

NEW



**FMO04**  
Yellow and white

NEW



**FMO05**  
Burgundy and pink



#FMO01

#FMO

# STRIPED



#FMO07

NEW



FMO06  
Amour

NEW



FMO07  
Sun

NEW



FMO08  
Kiss

NEW



FMO09  
Club

NEW



FMO10  
Bisou



#FMO09

#FC

# HEART



#FC09



BACK IN STOCK



**FC01**  
Khaki and burgundy



**FC02**  
Purple and yellow

BACK IN STOCK



**FC03**  
Navy and pink

BACK IN STOCK



**FC04**  
Red and pink



**FC05**  
Black and green

BACK IN STOCK



**FC06**  
Beige and green

NEW



**FC07**  
Olive green and pink

NEW



**FC08**  
Orange and purple

NEW



**FC09**  
White and green

NEW



**FC10**  
Light pink and pink

# GLITTER



#CP24



**CP02**  
Beige



**CP04**  
Black



**CP08**  
Mineral black



**CP12**  
Purple



**CP13**  
Copper



**CP14**  
Celadon



**CP15**  
Peach pink



**CP16**  
Grey



**CP17**  
Olive



**CP18**  
Blue



**CP19**  
Kkaki

NEW



**CP20**  
Rosewood

NEW



**CP21**  
Navy

NEW



**CP22**  
Red

NEW



**CP23**  
Ecru

NEW



**CP24**  
Light blue

# VINTAGE



#FPA15

---

Composition    48% combed cotton, 40% polyester,  
9% metallic fibers and 3% spandex

---

With a slightly longer sock height, 4 new trendy colors complete the vintage collection.



**FPA01**  
Burgundy



**FPA02**  
Green



**FPA04**  
Light pink



**FPA10**  
Copper



**FPA11**  
Blue grey



**FPA12**  
Dark pink

NEW



**FPA13**  
Indigo



**FPA14**  
Red

NEW



**FPA15**  
White

NEW



**FPA16**  
Brick

NEW



**FPA17**  
Duck blue

# ZEBRA



#FFL09

---

Composition    38% combed cotton, 37% polyester,  
22% nylon and 3% spandex

---

Made of metallic fibers, show off our style with the range of zebra and leopard socks. Dare to be different !



**FFL09**  
White



**FFL10**  
Beige



**FFL11**  
Light green



#FFL10

#FFL

# LEOPARD



#FFL17



**FFL01**  
Black



**FFL02**  
Khaki

BACK IN STOCK



**FFL03**  
Beige



BACK IN STOCK



**FFL04**  
Camel

BACK IN STOCK



**FFL07**  
Pink



**FFL12**  
Navy



**FFL13**  
Grey



**FFL14**  
Plum



**FFL15**  
Fir green

NEW



**FFL16**  
Blue

NEW



**FFL17**  
Olive green

NEW



**FFL18**  
Yellow

NEW



**FFL19**  
White

#FLA

WOOL



#FLA12

---

Composition    28% acrylic, 28% nylon, 22% wool,  
17% polyester, 3% spandex, 2% angora

---

Thick and warm women's wool socks combine quality and style, and keep you comfortably warm all winter long.



**FLA01**  
Black



**FLA02**  
Grey



**FLA05**  
Dark grey



**FLA06**  
Beige



**FLA09**  
Khaki



**FLA10**  
Mottled blue



**FLA11**  
Rosewood



**FLA12**  
Almond green

# MEN SCARVES



#ECF16

Dimensions	180 x 70 cm
Composition	100% organic cotton
Density	55 gr/m <sup>2</sup>
Certification	GOTS
Minimum qty	3 pieces / color

Enhance your look with cotton scarves. Six new, original and colorful prints to bring a touch of elegance to all your outfits. Made from GOTS-certified organic cotton, they are both gentle on the skin and respectful of the environment.



NEW

ECF15  
Dinard



NEW

ECF16  
Everglades



NEW

ECF17  
Nice



NEW

ECF18  
Bristol



NEW

ECF19  
Milano



NEW

ECF20  
Biarritz



#ECL06

Dimensions	180 x 70 cm
Composition	100% wool
Certification	OEKO-TEX®
Minimum qty	3 pieces / color

The men's wool scarf is the perfect accessory for the cool seasons. Soft and warm, it wraps you in comfort. With its generous dimensions, it offers optimal protection against the cold.



**ECL01**  
Lemon tree



**ECL02**  
Regular



**ECL03**  
Scottish



**ECL06**  
Barry

# WOMEN SCARVES



#WFC01

Dimensions	100 x 100 cm
Composition	100% organic cotton
Density	80 gr/m <sup>2</sup>
Certification	GOTS
Minimum qty	3 pieces / color

Women's scarves are the must-have accessory for a chic, casual look. Soft and lightweight, they are ideal for all seasons. With their three trendy prints (leopard, zebra, floral) available in several colors, they blend perfectly with all your outfits.



NEW



**WFC01**  
Justine

NEW



**WFC02**  
Jade

NEW



**WFC03**  
Suzanne

NEW



**WFC04**  
Célestine

NEW



**WFC05**  
Hélène

NEW



**WFC06**  
Servane

NEW



**WFC07**  
Lola

NEW



**WFC08**  
Ambre



#WFL03

Dimensions	100 x 100 cm
Composition	100% wool
Certification	OEKO-TEX®
Minimum qty	3 pieces / color

The wool scarf is a must-have for any woman's wardrobe. Its dimensions of 100 x 100 cm, its timeless design and its softness and warmth make it an elegant and functional accessory for all occasions.



**WFL01**  
Victoire



**WFL02**  
Violette



**WFL03**  
Sophie



**WFL04**  
Caroline



**WFL05**  
Pauline



**WFL06**  
Léna



**WFL07**  
Amélie

## CAPS



#CAV07

Size	One size
Composition	100% cotton
Certification	OEKO-TEX®
Minimum qty	3 pieces / color

A wardrobe classic, the cap is essential for casual urban style. Unisex and adjustable, it's suitable for all heads and all seasons. It's the perfect complement to any outfit, whether it's in faded cotton or velvet.





**CAC01**  
Burgundy



**CAC02**  
Kkaki



**CAC03**  
Light blue



**CAC04**  
Anthracite



**CAC05**  
Navy



**CAC06**  
Orange



**CAC07**  
Purple



**CAC08**  
Old pink



NEW

**CAV01**  
Khaki



NEW

**CAV02**  
Brown



NEW

**CAV03**  
Blue



NEW

**CAV04**  
Purple

NEW



CAV05  
Orange

NEW



CAV06  
Black

NEW



CAV07  
Pink

NEW



CAV08  
White

NEW



CAV09  
Dark green



#CAV04

# HATS



#BEA21

Size	One size
Composition	100% lambswool
Minimum qty	3 pieces / color

The BILLYBELT unisex hat, 100% lambswool, combines softness and comfort. Its stretchy knit adapts perfectly to all heads, while its contrasting label with the colored logo adds a touch of style. Ideal for keeping you warm in style.





**BEA01**  
Dark grey



**BEA03**  
Blue



**BEA04**  
Khaki



**BEA06**  
Light green



**BEA12**  
Grey



**BEA13**  
Black



**BEA14**  
Deep blue



**BEA15**  
Beige



**BEA16**  
English green



**BEA17**  
Bubblegum pink



**BEA18**  
Lila



**BEA19**  
Terracotta



**BEA20**  
Nude



**BEA21**  
Blue jean

#MUL

# SLIPPERS



#MUL08

Size	3.5/4 to 11/12 (UK size)*
Composition	100% polyester Rubber : caoutchouc

The slippers, in corduroy or sherpa, offer you incomparable comfort. Their warm sherpa interior and their soft and fluffy touch guarantee you perfect moments of relaxation. Rubber sole with BILLYBELT patterns and colorful logo for a unique style.

\*MUL05/06/08 = 5/5.5 to 11/12 and MUL07/09 = 3.5/4 to 6.5/7.5. (UK size)



**MUL05**  
Electric blue



**MUL06**  
Green



**MUL07**  
Pink



**MUL08**  
Orange sherpa



**MUL09**  
Purple sherpa

# BACKPACKS



#SAD30

Dimensions	48 x 28 x 12 cm
Volume	25/30 liters
Weight	800 gr
Composition	100% recycled polyester*

\*The SAD21 and SAD30 models are made from non-recycled polyester.

For urban adventurers, the backpack is the perfect companion. It offers effective protection for your belongings by being water-repellent and ultra-resistant. Its capacity, multiple compartments and laptop pocket combine practicality and style. Available in nine colors (including 1 waterproof model), its sleek design suits every look.





**SAD21**  
All black



**SAD23**  
Ivory and blue



**SAD24**  
Slate and orange



**SAD25**  
Adventurer



**SAD26**  
Multicolored



**SAD27**  
Khaki and navy



**SAD28**  
Black and khaki



**SAD29**  
Taupe



**SAD30**  
Black



#SO

## LAPTOP BAGS

#SO05

Dimensions	41 x 30 x 7 cm
Composition	70% cotton, 30% polyester Lining : 100% cotton Polar : 100% polyester Leather : 100% calfskin leather

The computer bag combines robustness and elegance. Designed in thick, water-repellent waxed cotton canvas, it protects your equipment thanks to its padded pocket. Cowhide leather finishes, cotton lining and ultra-resistant YKK zippers.





S005  
Black



S007  
Khaki



#S005

# DUFFLE BAGS

#DUF05

Dimensions	27 x 52 x 26 cm
Volume	37 liters
Composition	100% polyurethane Coating: 100% polyester

Versatile and durable, this travel bag is the ideal companion for all your adventures. Whether for a weekend in town or an extended trip, it adapts to all your needs. Its small outside pocket keeps your valuables close at hand.



**DUF01**  
Khaki



**DUF03**  
Silver grey



**DUF04**  
Metallic pink



**DUF05**  
Yellow



# WASH BAGS



#TDT02

Dimensions	12 x 25 x 21 cm
Composition	100% polyurethane

The toiletry bag is the perfect ally for your travels. Made from waterproof polyurethane, it effectively protects your beauty and hygiene products. Its compact size and two interior pockets make it easy to organize all your essentials.



**TDT01**  
Khaki



**TDT02**  
Yellow



**TDT09**  
Silver grey



**TDT10**  
Metallic pink





#TDT12

Dimensions	13 x 21 x 11 cm
Composition	100% recycled polyester*

The 100% recycled polyester toiletry bag is the ideal accessory for all travelers. Compact and practical, it follows you everywhere. Its large interior pocket makes it easy to organize all your essentials. It can be adapted to any style with seven trendy colors available.

\*The TDT04 model is made of non-recycled polyester.



**TDT04**  
Black stone



**TDT05**  
Green and navy



**TDT06**  
Multicolored



**TDT07**  
Navy and ivory



**TDT08**  
Taupe and orange

NEW



**TDT12**  
Orange and green

NEW



**TDT13**  
Red and blue

# WALLETS



#PM02

Dimensions	9 x 12.5 x 1.5 cm
Composition	100% polyester

Small and practical, the wallet slips easily into your pocket. It has a large coin compartment and several card slots, providing all the space you need. Its compact size and light weight make it an essential accessory.





**PM01**  
Khaki



**PM02**  
Multicolored



**PM03**  
Black



**PM04**  
Navy and green





#PF06

---

Dimensions	12.75 x 9.5 x 2 cm
Composition	Outer : 100% polyester Lining : 100% calfskin leather Inner : 100% polyester

---

The wallet combines practicality and style. With its multiple pockets for bank cards and coins, it is designed in recycled polyester, for an eco-responsible approach. Its cowhide leather finishes add a touch of style.



**PF06**  
Khaki



**PF07**  
Navy Jean



#PF07

# POS ADVERTISING





BACK IN STOCK

**PRE09** Belts, boxer briefs or boxer shorts furniture

Dimensions 210 x 68.5 x 24.5 cm



**PRE10** Socks tree

Dimensions 130 x 45.6 x 45.6 cm



**PRE05** Clothes rack

Dimensions 150 x 100 x 50 cm



**PRE01** Boxer shorts or belts display

Dimensions 49 x 20 x 33.5 cm



**PRE03** Boxer briefs or socks display

Dimensions 63 x 60 x 27.5 cm



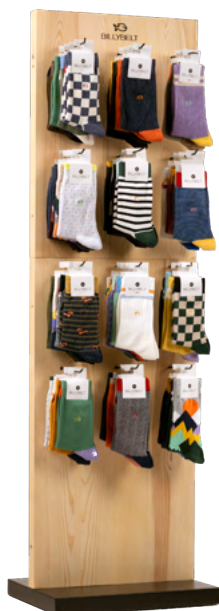
---

**PRE07**      Socks display

---

Dimensions    **57 x 30 x 30 cm**

---



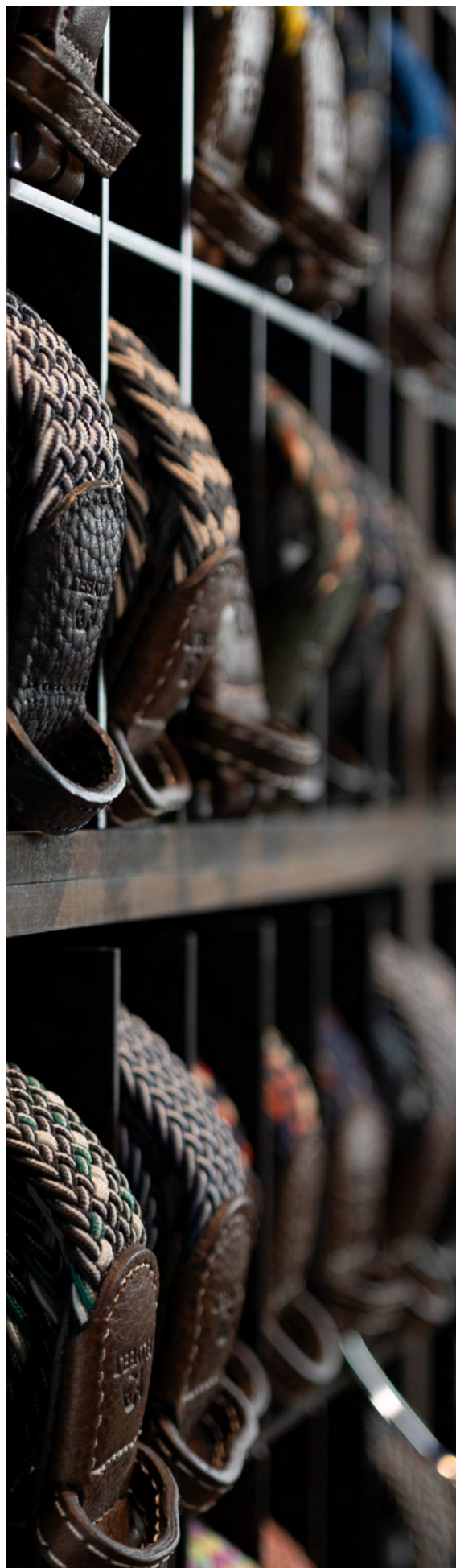
---

**PRE08**      Socks or boxer briefs display

---

Dimensions    **153 x 57 x 35 cm**

---





<b>BXD001</b>	<b>Black duo box</b>
Dimensions	110 x 104 x 84 mm



<b>BXD011</b>	<b>Orange duo box</b>
Dimensions	110 x 104 x 84 mm



<b>BXD012</b>	<b>Dark green duo box</b>
Dimensions	110 x 104 x 84 mm



<b>BXD014</b>	<b>Silver duo box</b>
Dimensions	110 x 104 x 84 mm



<b>BXD015</b>	<b>Leopard duo box</b>
Dimensions	110 x 104 x 84 mm



<b>BXB001</b>	<b>Gift sleeves <sup>(2)</sup></b>
Dimensions	215 x 150 mm

<sup>(1)</sup> 2 or 3 pairs of socks, 1 belt + 1 pair of socks, or 2 belts.

<sup>(2)</sup> Pack of 10 units.





**BX3B01**      Box of 3 boxers briefs

Dimensions      135 x 175 x 165 mm



**BX5B01**      Box of 5 boxers briefs

Dimensions      135 x 175 x 165 mm



**BX3C01**      Box of 3 or 4 boxers shorts

Dimensions      90 x 210 x 215 mm



**BX5C01**      Box of 5 or 6 boxers shorts

Dimensions      90 x 310 x 210 mm



**BXS01**      Small weekpack <sup>(3)</sup>

Dimensions      110 x 165 x 104 mm



**BXGS01**      Large weekpack <sup>(4)</sup>

Dimensions      95 x 275 x 108 mm

<sup>(3)</sup> 4 to 5 pairs of socks, or 2 pairs of socks + 1 belt, or 1 boxer short + 1 pair of socks + 1 belt.

<sup>(4)</sup> 6 to 7 pairs of socks, or 2 boxers shorts + 2 pairs of socks, or 1 t-shirt + 1 boxer shorts.

# STARTING ADVICE



## NEED ADVICE ON YOUR ASSORTMENT ?

To guide you through your first purchases, we've made it easy for you with a list of the most commonly sold and top-rated items by our customers. Ready for the BILLYBELT adventure ?

### WEBBING BELTS

Multicolored - Haka  
Multicolored - Rhodes  
Multicolored - Bruges  
Multicolored - Knokke  
Multicolored - Ambleteuse

CB138  
CB135  
CB125  
CB129  
CB131

Multicolored - Sherwood  
Plain - Navy  
Plain - All black  
Plain - Aqua green  
Plain - Topaz yellow

CB140  
CM04  
CM67  
CM83  
CM86

**UNDERWEAR**

Boxer briefs - Lobster	B078	Boxer shorts - Wimbledon	CA93
Boxer briefs - Checked	B082	Boxer shorts - Citrus	CA92
Boxer briefs - Valentin	B081	Boxer shorts - Back to school	CA94
Boxer briefs - Billy red	B084	Boxer shorts - Paimpol Bay	CA96
Boxer briefs - Aloa	B083	Boxer shorts - Valentin	CA98

**SOCKS**

Retro - White, blue striped	TE22	Striped - Elegant	RA64
Patterned - Surf	CHL34	Wide striped - Navy, beige striped	RL38
Patterned - Bike	CHL35	Ankle - White	SU15
Bamboo - Mottled blue	CBA05	Checked - Silverstone	KRO07
Plain - Mottled dark green	UF08	Mid-cut - Khaki, beige striped	CMH06

**CLOTHES**

Swim shorts - Redwood coast	MDB06	Sweatshirt - Green	SWV01
Swim shorts - Blooming beach	MDB10	Sweatshirt - Blue	SWV02
T-shirt - Blue, BILLYCLUB print	TSV06	Overshirt - Denim stone	SD02
T-shirt - White, surfer print	TSV08	Velvet shorts - Anthracite	SHV08
T-shirt - White, flower print	TSV11	Velvet shorts - Khaki	SHV09

**ACCESSORIES**

Cap - Burgundy	CAC01	Velvet cap - Dark green	CAV09
Cap - Khaki	CAC02	Cotton scarf - Everglades	ECF16
Cap - Navy	CAC05	Cotton scarf - Nice	ECF17
Velvet cap - Khaki	CAV01	Cotton scarf - Milano	ECF19
Velvet cap - Brown	CAV02	Cotton scarf - Biarritz	ECF20

**LUGGAGE**

Backpack - Ivory and blue	SAD23	Wash bag - Red and blue	TDT13
Backpack - Khaki and navy	SAD27	Duffle bag - Metallic pink	DUF04
Wash bag - Silver grey	TDT09	Duffle bag - Yellow	DUF05
Wash bag - Metallic pink	TDT10	Wallet - Khaki	PM01
Wash bag - Orange and green	TDT12	Wallet - Navy and green	PM04

**WOMEN**

Checked - White and black	FM002	Heart - Light pink and pink	FC10
Striped - Club	FM009	Glitter - Navy	CP21
Vintage - Red	FPA14	Glitter - Red	CP22
Leopard - Blue	FFL16	Cotton scarf - Justine	WFC01
Leopard - White	FFL19	Cotton scarf - Lola	WFC07



**BILLYBELT**

---

Our sales advisors are at your disposal to assist you in the **BILLYBELT** adventure.

We can be reached by phone or email :

**+33 (0)3.28.35.38.89**  
**[contact@billybelt.com](mailto:contact@billybelt.com)**

# BILLYBELT



FALL / WINTER PRE-ORDERS

2025



**CLOTHES**

- Bi-material jackets
- Unisex sherpa jackets
- Women sherpa jackets
- Fleece sweats
- Sweatshirts
- Overshirts

03

- 03
- 06
- 08
- 10
- 12
- 14

**ACCESSORIES**

- Men scarves
- Women scarves
- Women bandanas
- Slippers

16

- 16
- 18
- 20
- 23

**LUGGAGE**

- Wash bags

25

25

# BI-MATERIAL JACKETS



#SHE25

Sizes	XS to XXL
Composition	100% polyester, including 35% recycled
Density	340 gr/m <sup>2</sup>

Discover the new bi-material jackets, combining style and comfort. Available in four colors, these quilted sherpa jackets come in long-sleeved and sleeveless versions. Their contrasting chest pocket and breathable mesh interior make them a stylish product that is perfect for winter!



**SHE21**  
Black and green



**SHE25**  
Black and green



**SHE22**  
Ivory and navy



**SHE26**  
Ivory and navy



**SHE23**  
Green



**SHE27**  
Green





SHE24  
Navy



SHE28  
Navy



#SHE26

# UNISEX SHERPA JACKETS



#SHE37

Sizes	XS to XXL
Composition	100% polyester, including 35% recycled
Density	340 gr/m <sup>2</sup>

Discover the new BILLYBELT sherpa zip-up jackets. Available in long sleeves or sleeveless, they offer a straight cut, a chest pocket with contrasting details and a mesh interior for optimal comfort.



**SHE34**  
Ivory and blue



**SHE37**  
Ivory and blue



**SHE35**  
Navy and green



**SHE38**  
Navy and green



**SHE36**  
Natural and burgundy



**SHE39**  
Natural and burgundy

#SHE

# WOMEN SHERPA JACKETS

#SHE32

Sizes	S to L
Composition	100% polyester, including 35% recycled
Density	340 gr/m <sup>2</sup>

Opt for style with women zip-up jackets. Their soft texture and unique printed mesh interior make these jackets a wardrobe staple, with five new colorful options to explore!



SHE29  
Khaki



SHE30  
Pink



SHE31  
Beige



SHE32  
Navy

BACK IN STOCK



SHE33  
Checked



SHE19  
Ivory

## FLEECE SWEATS



#POLO3

Sizes	S to XXL
Composition	100% recycled polyester
Density	320 gr/m <sup>2</sup>

Featuring a zipped collar and a straight cut, the fleece sweatshirts are perfect for facing the cold. Available in four colours, they have two velcro pockets and a fleece lining for optimal comfort.



**POLO1**  
White and blue



**POLO2**  
Navy



**POLO3**  
Red



**POLO4**  
Navy and green

# SWEATSHIRTS



#SWE01

Sizes	S to XXL
Composition	100% organic cotton
Density	400 gr/m <sup>2</sup>
Certification	GOTS

Discover our new sweatshirts, both durable and incredibly soft. Available in 4 new colors, they reinvent this timeless classic with style. The embroidered logo on the chest and garment-dyed finish give them a unique character.





**SWE01**  
Purple



**SWE02**  
Dark grey



**SWE03**  
Green



**SWE04**  
Burgundy

## OVERSHIRTS

#SUR04

Sizes	S to XXL
Composition	85% recycled polyester, 10% viscose and 5% spandex
Density	420 gr/m <sup>2</sup>

Available in 4 new colours and featuring a wrinkle-free knit, the overshirts offer exceptional durability, while remaining soft to the touch. Their straight cut and two chest pockets add a practical and elegant touch to your look!



**SUR03**  
Khaki



**SUR04**  
Black



**SUR05**  
Dark green



**SUR06**  
Burgundy

# MEN SCARVES



Dimensions	180 x 70 cm
Composition	100% wool
Density	55 gr/m <sup>2</sup>
Certification	GOTS
Minimum qty	3 pieces / color

Wrap yourself in warmth with the new wool scarves. They offer uncompromising softness and are designed without substances harmful to health. Available in six elegant models, they are perfect for protecting yourself from cool temperatures while staying stylish!



**ECL07**  
Gaspard



**ECL08**  
Jean



**ECL09**  
Tanguy



**ECL10**  
Felix



**ECL11**  
Marceau



**ECL12**  
Eliott

# WOMEN SCARVES



#WFLO8

Dimensions	100 x 100 cm
Composition	100% wool
Certification	OEKO-TEX®
Minimum qty	3 pieces / color

Add a touch of elegance to your outfit with our new women's scarves. Light and comfortable to wear, they are perfect for any season. This collection now features six new designs with timeless patterns.



**WFL08**  
Madeleine - Ecrú



**WFL09**  
Madeleine - Black



**WFL10**  
Madeleine - Olive



**WFL11**  
Constance - Navy



**WFL12**  
Constance - Kakhi



**WFL13**  
Constance - Plum

# WOMEN BANDANAS



Dimensions	70 x 70 cm
Composition	100% wool
Certification	OEKO-TEX®
Minimum qty	3 pieces / color

Fan of mini versions? Bandanas are made for you! Measuring 70 x 70 cm, the bandanas come in two models, each available in three colors to add a touch of style to your outfit!





**WBL01**  
Alice - Red



**WBL02**  
Alice - Purple



**WBL03**  
Alice - Ecreu





**WBL04**  
Sasha - Terracotta



**WBL05**  
Sasha - Navy



**WBL06**  
Sasha - Khaki



# SLIPPERS



#MUL14

Sizes <sup>(1)</sup>	3.5/4 to 11/12 (UK size)
Composition <sup>(2)</sup>	100% polyester Sole: rubber

Discover the ultimate comfort of slippers for men and women. Their warm and soft sherpa interior envelops you in warmth. Available in six new colors, these slippers combine style and well-being for your moments of relaxation!

<sup>(1)</sup>MUL10/11/12 = 5/5.5 to 11/12 et MUL13/14/15 = 3.5/4 à 6.5/7.5. (UK size)

<sup>(2)</sup>MUL12 = 75% Polyester, 25% cotton



**MUL10**  
Camel sherpa



**MUL11**  
Navy sherpa



**MUL12**  
Green tiles



**MUL13**  
Brown sherpa



**MUL14**  
Cow sherpa



**MUL15**  
Leopard sherpa

# WASH BAGS



Dimensions	13 x 21 x 11 cm
Composition	100% recycled polyester

(Re)discover the BILLYBELT wash bags, made from 100% recycled polyester for an eco-responsible choice. Compact and practical, they offer a large interior pocket and three interior side pockets to organize your essentials. They are available in five new trendy colors for all your getaways!



**TDT14**  
Green and black



**TDT15**  
Red and pink



**TDT16**  
Purple and green



**TDT17**  
Navy and burgundy



**TDT18**  
Blue and khaki



BILLYBELT

---

Our sales advisors are at your disposal to assist you in the **BILLYBELT** adventure.

We can be reached by phone or email :

**+33 (0)3.28.35.38.89**  
**[contact@billybelt.com](mailto:contact@billybelt.com)**